

Sensor Caps, EndNozes™ & Ceramic Faces

Abrasion protection products protective caps and faces eliminate the top reason for sensor failure, abrasion! Caps and faces can make the difference between uptime and downtime.

Features

- Wide variety of protective materials
- Thread-on caps or epoxy-on faces
- For shielded & non-shielded sensors
- Teflon® models for Quicktubes™

Benefits

- Reduces and or eliminates abrasion damage
- Lower downtime & sensor replacement expenses
- Quick solution to costly problems
- Reduce spare sensor inventories

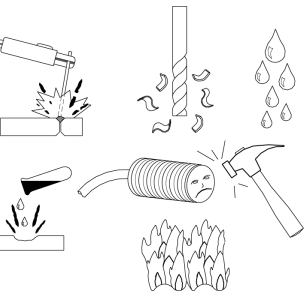
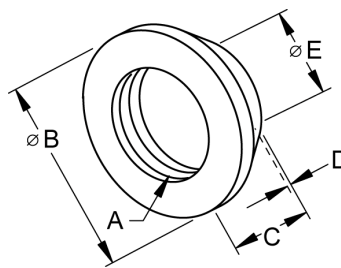


EndNoze™ Caps- Are beveled and designed for use with our Cushioned Sensor Mounts with side approaching targets, see page 4-6. Shielded style EndNoze caps are glass-filled nylon, while non-shielded versions are Delrin®. Caps simply thread-on for easy abrasion protection. Replace just the cap when wear becomes excessive, not your sensor!

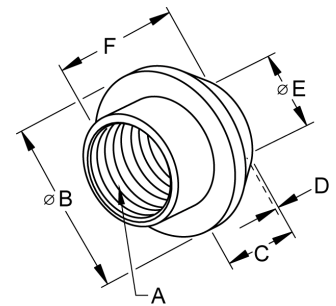
Model	A	B	C	D	E	F
EN-08	M8 x 1	15.2 (.600)	5.28 (.210)	0.38 (.015)	6.45 (.250)	NA
EN-08N		14.5 (.570)	5.08 (.200)			9.50 (.370)
EN-12	M12 x 1	24.4 (.960)	6.35 (.250)	0.76 (.030)	11.4 (.450)	NA
EN-12N		22.9 (.900)	6.35 (.250)			17.3 (.680)
EN-18	M18 x 1	31.3 (1.23)	8.38 (.330)	0.76 (.030)	17.5 (.730)	NA
EN-18N		34.0 (1.34)	8.38 (.330)			17.8 (.700)
EN-30	M30 x 1.5	43.7 (1.72)	7.62 (.300)	1.02 (.040)	29.2 (1.15)	NA
EN-30N		44.5 (1.75)	7.87 (.310)			22.9 (.900)



For shielded sensors
EN-xx

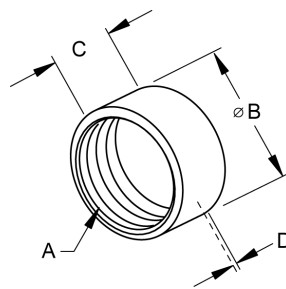


For non-shielded sensors
EN-xx N



Sensor Caps- Specify material type, add "D" for Delrin, "T" for Teflon® and "C" for ceramic. Ceramic caps are stocked for shielded sensors only. Model number example; SC-12-T.

Model	A	B	C	D
SC-12	M12 x 1	14.7 (0.58)	8.90 (0.35)	0.89 (.035)
SC-12N			15.2 (0.60)	
SC-18	M18 x 1	24.1 (0.95)	8.90 (0.35)	1.14 (.045)
SC-18N			17.8 (0.70)	
SC-30	M30 x 1.5	38.1 (1.50)	9.90 (0.39)	2.03 (0.08)
SC-30N			25.4 (1.00)	

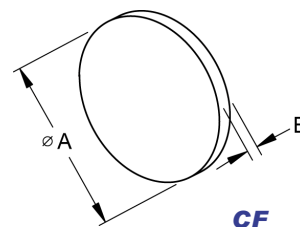


SC & QTC style caps

Quicktube™ Caps- Teflon protection for Quicktubes (see pg. 6) in welding applications.

Model	A	B	C	D
QTC-08-T	M12 x 1	14.7 (0.58)	8.89 (0.35)	0.89 (.035)
QTC-12-T	M16 x 1	19.1 (0.75)	7.11 (0.28)	1.02 (.040)
QTC-18-T	M24 x 1.5	28.4 (1.12)	8.89 (0.35)	1.27 (.050)
QTC-30-T	M36 x 1.5	41.1 (1.62)	8.89 (0.35)	1.78 (.070)

Ceramic Faces- Bonds to sensor face. Epoxy available, order p/n **"CFE-100"**.



CF

Model	A	B
CF-08	5.80 (0.23)	0.30 (.012)
CF-12	10.4 (0.41)	
CF-18	15.2 (0.60)	0.50 (.020)
CF-30	27.9 (1.10)	

Note- The wear surface thickness, dimension "D" ("B" on Ceramic Faces) does not reduce a sensor's sensing range, but will consume an equal amount of the gap between the sensor and target.