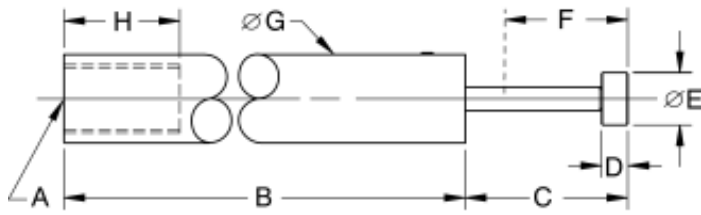


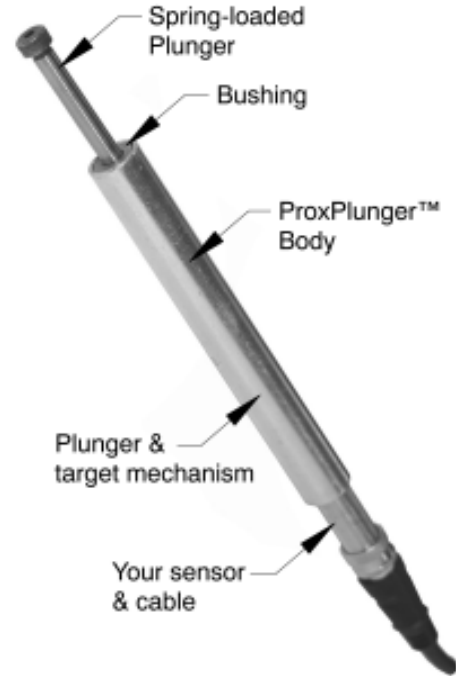
ProxPlunger™ & WeldSwitch™



Model	PPL-12-13	PPL-12-38	PPL-12-50	PPL-18-38
A	M12 x 1			M18 x 1
B	130 (5.13)			
C	17.7 (.697)	43.2 (1.70)	55.9 (2.20)	43.2 (1.70)
D	4.70 (.185)			
E	9.27 (.365)			
F	12.7 (0.50)	38.1 (1.50)	50.8 (2.00)	38.1 (1.50)
G	15.9 (.625)			22.2 (.875)
H	15.2 (0.60)			23.1 (0.91)

Notes: 1) Plunger requires approx. 224grams (8oz.) for initial displacement and sensor activation. 2) For use with shielded-type proximity sensors only. 3) Mount with Block Mounts (12 & 22mm versions) on page 11. 4) Custom designs gladly quoted- please contact factory to discuss options or see pages 42-43.

ProxPlunger™ is a "long stroke" switching device. Once installed a standard proximity sensor triggers early in the stroke, but the plunger's built-in overtravel makes compliance with inaccurate targets a snap.



WeldSwitch™ designed for automotive welding cells and other molten-metal applications. WeldSwitch™ functions like our ProxProbe™ Adapter, however WeldSwitch™ offers a more compact design and the plunger (and or body) are manufactured from solid copper. When combined with a standard proximity, WeldSwitch™ becomes a robust and long-life input device that is immune to harsh temperatures and extremely hot metal splatter.

Model	PPLWS-1-12	PPLWS-2-12	PPLWS-3-12
Materials of Construction	Operator: Copper Barrel: CRS/Zinc Housing: Delrin®	Operator: Copper Barrel: Copper Housing: Delrin®	Operator: Copper Barrel: Copper Housing: Copper

Notes: 1) Plunger requires approximately 224grams (8oz.) for initial displacement and sensor activation. 2) Sensor activates within ~2.5mm(0.1") of stroke and then offers 25.4mm(1") overtravel. 3) For use with shielded-type proximity sensors only. 4) Custom designs are readily quoted, please contact factory to discuss options, or see pages 42-43.

