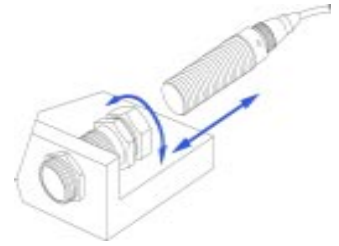




Quicktube™ Install tubular proximity sensors with a mount that securely holds and releases a sensor with a quick twist of a single collet-style nut. Speeds installation and replacement procedures.



Features

- Collet-style locknut secures sensor
- Integral stop shoulder maintains target gap
- 8, 12, 18 and 30mm sizes
- Short or long barrel lengths

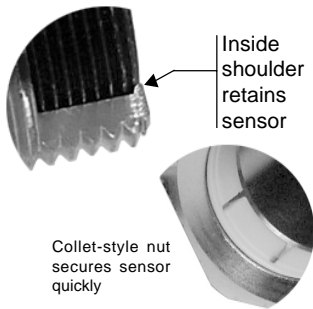
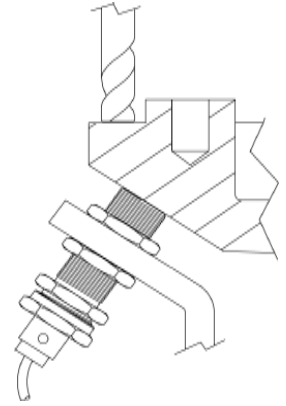
Benefits

- Housing protects sensor from physical impact
- Sensor change-out is fast, no adjustments required
- Target / product can rest on sensor face
- New applications for sensors



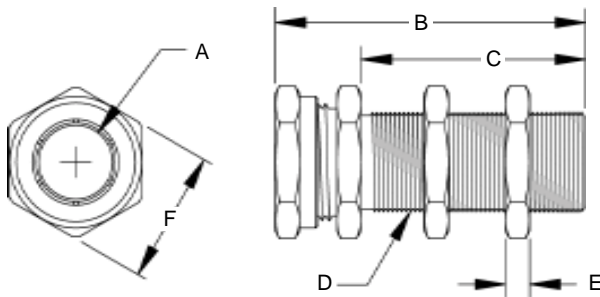
Use as a "Smart Rest Pad"

As shown at right, you can use Quicktube™ as a "smart rest pad" for tooling and fixturing. With sensors protected by Quicktube you can rest castings or work pieces right on your sensors. Quicktube can take the load and adjustments are easy via the threaded housing. Sensors confirm part positioning to initiate machining, welding or other control cycles.



Unique features

The Quicktube™ has a small shoulder on the inside bore that retains the sensor at its sensing face. This feature prevents sensors from passing through and therefore the target gap is always maintained. Installation or removal takes only a few turns of the collet-style nut.



Model	A	B	C	D	E	A
QT-08	8.18 (0.32)	32.4 (1.28)	17.5 (0.69)	M12 x 1	3.85 (0.15)	16.9 (0.67)
QT-08L		48.0 (1.93)	34.0 (1.34)			
QT-12	12.1 (0.48)	33.7 (1.34)	19.5 (0.77)	M16 x 1	4.01 (0.16)	21.8 (0.86)
QT-12L		44.8 (1.76)	30.0 (1.18)			
QT-18	18.1 (0.71)	38.5 (1.52)	20.0 (0.79)	M24 x 1.5	4.95 (0.19)	30.0 (1.18)
QT-18L		58.0 (2.28)	40.0 (1.57)			
QT-30	30.1 (1.19)	35.0 (1.50)	20.0 (0.79)	M36 x 1.5	6.13 (0.24)	41.0 (1.61)
QT-30L		58.0 (2.28)	40.0 (1.57)			

Teflon® Coated

Teflon® coating repels weld splatter, select from model numbers below. All dimensions are equal to regular Quicktubes™.

Barrel	8mm	12mm	18mm	30mm
Short	QT-08-T	QT-12-T	QT-18-T	QT-30-T
Long	QT-08L-T	QT-12L-T	QT-18L-T	QT-30L-T

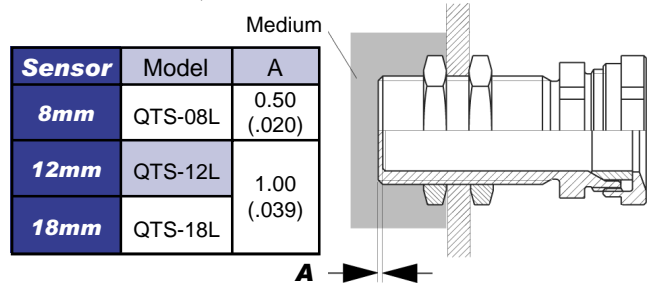
Plastic Housing

Identical dimensions to our regular "QT's" at left, but with a Delrin® polymer housings for when metal won't work! Mounting nuts are metal.

Barrel	8mm	12mm	18mm	30mm
Short	QT-08-P	QT-12-P	QT-18-P	QT-30-P
Long	QT-08L-P	QT-12L-P	QT-18L-P	QT-30L-P

Sealed Face Plastic Housing

A sealed face QT allows a water tight seal to be developed. Same dimensions as "long-style" QT's at left, accept for the wall thickness "A", as shown below:



Sensor	Model	A
8mm	QTS-08L	0.50 (.020)
12mm	QTS-12L	1.00 (.039)
18mm	QTS-18L	