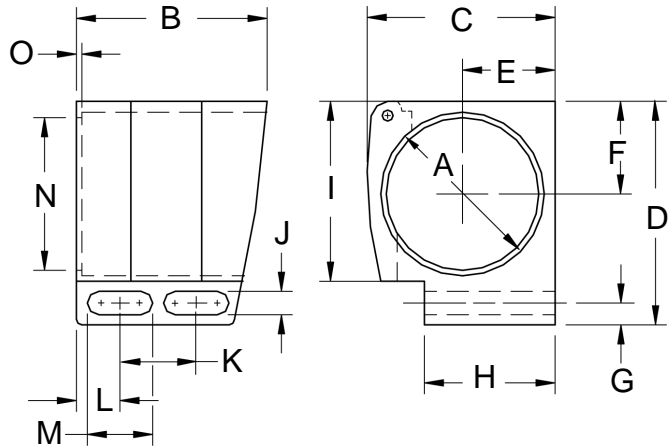


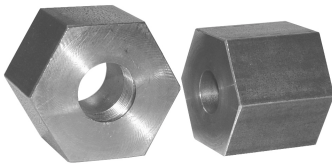
QuickMount™, Weld-On™ & MicroCollet™

QuickMount™ is a plastic block mount with a hinged lever top, which snaps closed to secure tubular sensors. Adjust via slotted mounting holes or by opening and closing hinged lever. Glass-filled Nylon for 12, 18 and 30mm sensors.



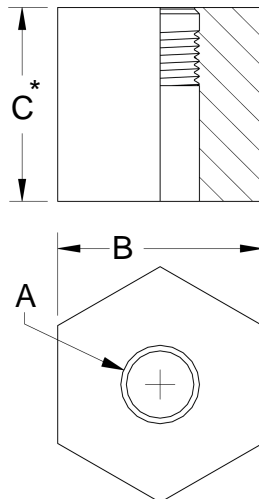
| Model Number | | | | | | | | | | | | | | | | | |
|--------------|----------------|---|----------------|---|----------------|---|----------------|---|----------------|---------|----------------|---|----------------|---|----------------|---|----------------|
| BMQM-12 | | | | | BMQM-18 | | | | | BMQM-30 | | | | | | | |
| A | 12mm | F | 8.00 (.315) | K | 14.0 (.551) | A | 18mm | F | 11.5 (.453) | K | 14.0 (.551) | A | 30mm | F | 17.1 (.673) | K | 14.0 (.551) |
| B | 30.0 (1.18) | G | 4.00 (.157) | L | 8.00 (.315) | B | 30.0 (1.18) | G | 4.00 (.157) | L | 8.00 (.315) | B | 35.1 (1.38) | G | 4.00 (.157) | L | 8.00 (.315) |
| C | 18.0 (0.71) | H | 8.00 (.315) | M | 12.0 (.472) | C | 24.0 (.945) | H | 13.9 (.547) | M | 12.0 (.472) | C | 34.5 (1.36) | H | 24.1 (.949) | M | 12.0 (.472) |
| D | 24.0 (0.95) | I | 16.0 (0.63) | N | 10.8 (.425) | D | 29.0 (1.14) | I | 21.0 (.827) | N | 17.0 (.669) | D | 41.1 (1.62) | I | 33.3 (1.31) | N | 28.1 (1.11) |
| E | 8.00 (.315) | J | 4.20 (.165) | O | 0.25 (.001) | E | 11.0 (.433) | J | 4.20 (.165) | O | 0.25 (.001) | E | 17.5 (.689) | J | 4.20 (.165) | O | 0.25 (.001) |

Weld-On™ unfinished steel HEX slugs, bored and tapped for 12, 18 and 30mm sensors. Ready to be welded into place to fully protect sensors from physical abuse. Threaded end has a built-in stop shoulder that insures sensor position.



| BM-WO-xx | | | |
|------------|---------|----------------|----------------|
| (suffix) | A | B | C* |
| -12 | M12x1 | 33.3 (1.31) | 30.2 (1.19) |
| -18 | M18x1 | 6.91 (1.50) | |
| -30 | M30x1.5 | 47.6 (1.88) | 44.5 (1.75) |

*Other lengths in stock, consult factory.



MicroCollet™ These collet-type sleeves allow for more secure and damage free mounting of 4 and 6.5mm sensors. Simply drill and ream your fixture and then bond the MicroCollet™ in place. Secure and adjust sensors with the Delrin® adjustment nut. Eliminates tapping and damaging set screws. Barrels are stainless steel.

| Model | A | B | C | Ream fixture |
|---------------|----------------|----------------|----------------|------------------|
| MC-04 | 26.2 (1.03) | 11.0 (.433) | 9.70 (.380) | 5.410 (.2130) |
| MC-6.5 | 31.0 (1.22) | 13.7 (.539) | 12.7 (0.50) | 7.937 (.3125) |

