

The **BM-PT** is a strong, durable, yet plastic sensor bracket. They offer an excellent foundation for mounting and securing threaded, barrel-style, sensors. Fabricated from a widely-accept engineering resin, each includes the required stainless steel machine screws and nuts.



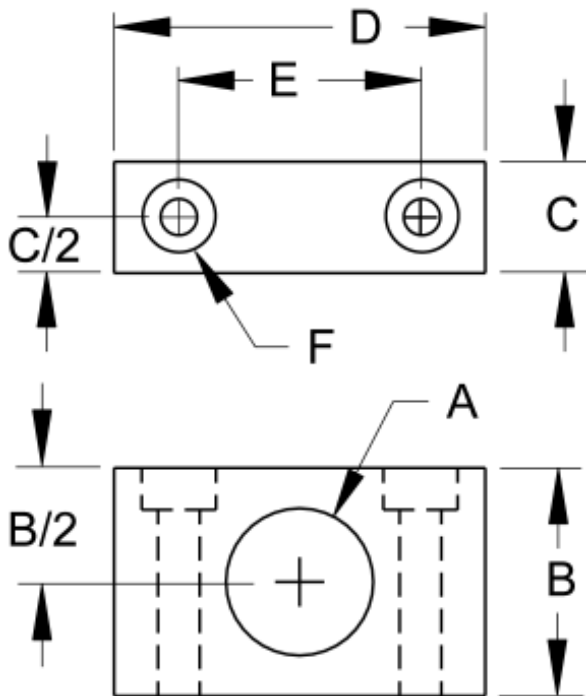
BM-PT-12
As supplied for M12x1 sensors, with included fasteners.



BM-PT-18
Shown with M18x1 inductive sensor

A complete solution with stock models fitting; M8x1, M12x1, M18x1 & M30x1.5 sensors. Standard material is black Delrin (acetal plastic) for body, and the fasteners are 304 stainless steel. Customs and modifications are routinely produced. To allow additional positioning of sensors, select additional components that include optional; shims, risers and extensions, please see next page. Many other materials and finishes are possible, so we invite you to consult SoftNoze when needed.

Specifications dimensions mm(inch)



Model	A	B	C	D	E	F
BM-PT-08	M8 x 1	15.0 (0.59)	12.7 (0.50)	25.4 (1.00)	18.4 (0.72)	6-40 x 1"
BM-PT-12	M12 x 1	23.1 (0.91)	12.7 (0.50)	31.8 (1.25)	19.6 (0.77)	10-32 x 1-1/2"
BM-PT-18	M18 x 1	29.2 (1.15)	15.9 (0.63)	44.5 (1.75)	30.5 (1.20)	10-32 x 1-1/2"
BM-PT-30	M30 x 1.5	50.8 (2.00)	22.4 (0.88)	63.5 (2.50)	50.8 (2.00)	1/4-20 x 3"

Notes & Configurable Dimensions: The above Model Numbers ship with a pair of SHCS fasteners; including flat & lock washers and a nut-sizes & lengths per chart. Add a suffix to the Model Number for these changes:

- **M** For metric fasteners
- **NF** For Block Mount body only, no fasteners

A common request is for dimension "B" to be increased, so to customize:

- **B**___ and replace ___ with desired "B" dimension...

... for example, **BM-PT-B080** where "B" is 80mm(3.15"). Note that dimension B/2 remains equal to the stock dimension as indicated by chart above.